

2-1

VIUT
UTTARLAI

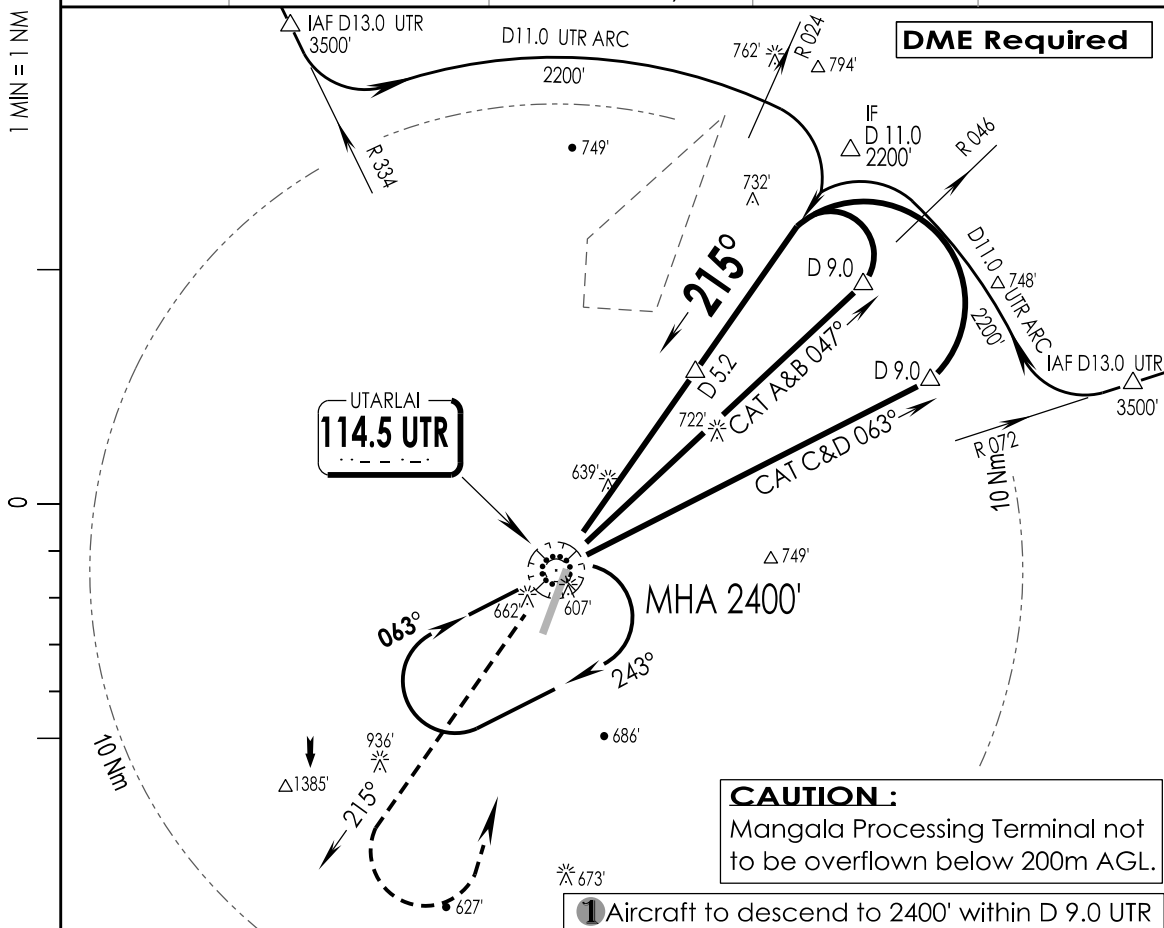
IAF
14 FEB 19

UTTARLAI, INDIA
VOR Z RWY 20

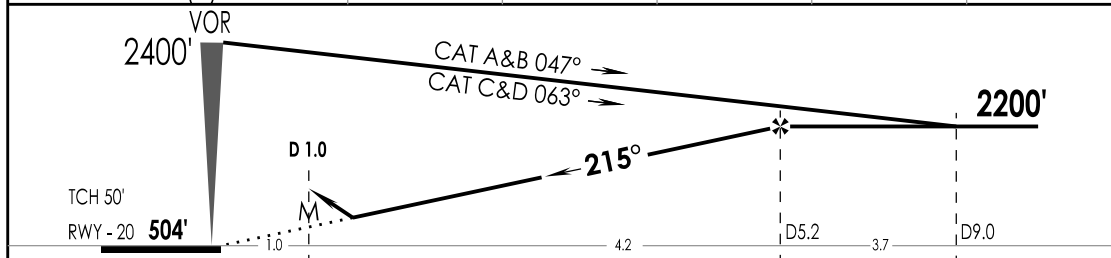
UTTARLAI Tower 123.2, VC, UC		UTTARLAI Approach 123.2, VC, UC		ATIS 114.5	<p>3500' 1 MSA UTR VOR</p>
VOR UTR 114.5	FINAL Apch Crs 215°	FAF D 5.2 UTR 2200'	MDA (H) As per table	Apt Elev 505'	
				RWY 504'	

MISSED APCH: Climb STRAIGHT ahead to 1600', then climbing Turn Left to join VOR hold at 2400' or as directed by ATC.

Alt Set: hPa | Rwy Elev: 17 hPa | Trans level: By ATC | Trans alt: 4000'



UTR DME	5.2	5.0	4.0	3.0	2.0
ALTITUDE (ft)	2200	2140	1820	1500	1180



GND SPEED KTS	80	100	120	140	160	180	↑ 1600'	2400' ↓
GRADIENT 5.2 %	425	531	637	743	849	955		

STRAIGHT-IN LANDING RWY 20				CIRCLE - TO - LAND		
CDFA				Max Kts	MDA (H)	VIS
MDA(H)	AB: 890' (385')	CD: 940' (435')				
	FULL	ALS OUT				
A	RVR 1100m	RVR 1500m		100	1170' (665')	3300m
B				135		
C	RVR 1300m	RVR 2000m		180	1330' (825')	3800m
D				205		

LIGHTING : CAT-II (20), CL15M(02/20), HIRL 60 M (02/20), TL (02/20), HIALS (20), PAPI (02L/20R), SALS (02)

CHANGES : LIGHTING IPDC, DTE OF OPS (T & H)